

Free Scholarship Searches

www.SchoolSoup.com

www.scholarships.com

www.HBCUmentor.org

www.collegeispossible.org

www.mapping-your-future.org

www.collegeexpress.com

www.AIE.org

www.wiredscholar.com

www.collegequest.com

www.fastweb.com

www.finaid.org

www.college-scholarships.com

www.collegeboard.org

www.collegenet.com

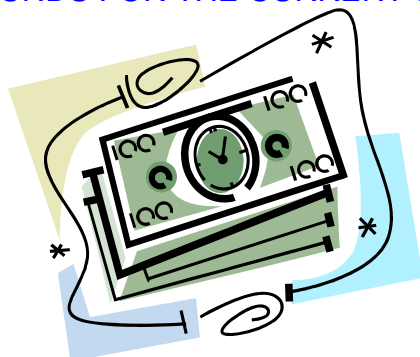
www.salliemae.com

Apply Texas Application

www.applytexas.org

SCHOLARSHIP OPPORTUNITIES

PLEASE CHECK THIS SITE OFTEN FOR MORE SCHOLARSHIPS BEING ADDED. ALSO, SOME MAY BE DELETED DUE TO LACK OF FUNDS FOR THE CURRENT SCHOOL YEAR.



SCHOLARSHIP APPLICATION TIPS

- ✓ Apply for at least 20-40 scholarships
- ✓ Check our helpful website page for more national scholarships
- ✓ Applications should be neat and always TYPED, not handwritten unless specified
 - ✓ Make sure that you meet all requirements
 - ✓ Read directions and follow them carefully
 - ✓ Keep a copy for your records
 - ✓ Check and recheck the deadline
- ✓ Mark deadline dates for each application on a calendar
- ✓ Mail application at least ten days before the deadline
- ✓ Keep a separate list for applications sent and scholarships received
 - ✓ Complete the FAFSA at www.fafsa.ed.gov

| SCHOLARSHIP NAME | CRITERIA | AMOUNT | DEADLINE |
|--------------------|--|---------------------|--|
| STATE FARM SCHOLAR | *Actively participate in athletic competitions and | 50 - \$1,000 awards | August 1 – April 13 For more information www.TexasScholarAthlete.com |

| | | | |
|---|---|--|---|
| ATHLETE | <p>practices</p> <ul style="list-style-type: none"> *maintain a 3.0 GPA *Graduate of this current school year *Leadership and good citizenship on and off the field *Must be nominated by school official | | Seek nomination with high school counselor |
| TEXAS UNITED STATES SENATE YOUTH LEADERSHIP | <ul style="list-style-type: none"> *Currently serving in an elected capacity in student government, civic, or educational organization *Attending a school where your parents or guardians legally reside | \$5,000 + Expense Paid Washington Trip | <p>Application at</p> <p>http://www.tea.state.tx.us/guidance/USSYP_07.pdf</p> |
| NATIONAL ASSOCIATION OF SECONDARY SCHOOL PRINCIPALS | <ul style="list-style-type: none"> *Participated and have documentation of community service activity *Applications will be reviewed by LaPoynor High School Scholarship Committee | | <p>Apply online at</p> <p>www.prudential.com/spirit or www.principals.org/prudential or see high school counselor</p> |
| HORATIO ALGER | <ul style="list-style-type: none"> *High School Senior *Pursue a Bachelor's Degree *Critical Financial need *Extracurricular and community activities *Minimum GPA of 2.0 *US citizen or permanent resident | | <p>Must submit online application at</p> <p>www.horatioalger.org/scholarships/apply.cfm</p> |
| COCA-COLA SCHOLARS | <ul style="list-style-type: none"> *Demonstrate leadership in school *Commitment to | <p>50 - \$20,000</p> <p>200 - \$10,000</p> | <p>Must apply online</p> <p>www.coca-colascholars.org</p> |

| | | | |
|---|---|--|--|
| | community *Academic achievement *Part-time employment *Graduate of current school year | | |
| NEELEY SCHOOL OF BUSINESS ENTREPRENEURSHIP PROGRAM | *Must own or operate your own business *10-12 grade may apply | 1 - \$5,000 5 - \$1,000 (Double when attending TCU) | May apply online at www.nep.youth.tcu.edu or see high school counselor |
| JOHN MONTGOMERY BELK SCHOLARSHIP PROGRAM | *Academic merit *Attend Davidson College | | www.davidson.edu/admission |
| SAM HOUSTON STATE UNIVERSITY ACADEMIC SCHOLARSHIP PROGRAM | *Admittance to SHSU *Official SAT/ACT scores *2 Letters of Recommendation *Extracurricular and leadership activities *Essay *There are several scholarships, and the criteria is different for each one. | Various amounts | http://www.shsu.edu/~sfa_scholarship.html |
| TEXAS STATE UNIVERSITY SCHOLARSHIP PROGRAM | * Must be accepted to TSU *Criteria varies with each scholarship | | Must apply online at www.finaid.txstate.edu/scholarships |
| SAE INTERNATIONAL | *Interest in the study of engineering and related sciences | | www.sae.org/students/engschlr.htm or see high school counselor |
| TOYOTA COMMUNITY SCHOLARS | *Academics *Leadership *Community Service | 100 scholarships valued at \$10,000 or \$20,000 payable over | Seek nomination with counseling office |

| | | | |
|------------------------|---|----------|---|
| | <ul style="list-style-type: none"> *Nominated by high school *Enter 4 year institution 2009 | 4 years | |
| BURGER KING SCHOLARS | <ul style="list-style-type: none"> *Maintain a cumulative grade point average of 2.5 or higher *Work part-time an average of 15 hours per week, 40 weeks per year *Demonstrate participation in community service and/or co-curricular activities *Demonstrate financial need *Receive written nomination and signature from a school official and an employer recommendation *Plan to enroll in an accredited two or four college, university, or vocational/technical school by Fall 2009 | | <p>Apply online at www.bk.com/scholars</p> |
| KFC COLONEL'S SCHOLARS | <ul style="list-style-type: none"> *Graduating from high school this school year *Cumulative GPA of 2.75+ *Enroll in a college no later than 09/30/09 *Pursue a bachelor's degree *US citizen or permanent resident | \$20,000 | <p>Apply online at www.kfcscholars.org</p> |

| | | | |
|---|---|---|--|
| AXA ACHIEVEMENT SCHOLARSHIP | <ul style="list-style-type: none"> *Ambition and drive *Determination to set and reach goals *Respect for self, family and community *Ability to succeed in college | <p>1 - \$10,000 to Texas student</p> <p>10 - \$15,000 to national recipients</p> | <p>www.axa-achievement.com</p> |
| COCA-COLA SHARE THE DREAM ESSAY CONTEST | <ul style="list-style-type: none"> *Essay *High school student grades 9-12 | <p>Grand prize - \$2500</p> <p>1st - \$1500</p> <p>2nd - \$1000</p> <p>20 awards of \$500</p> | <p>1-800-279-0901</p> <p>or see high school counselor</p> |
| JOHN F. KENNEDY PROFILE IN COURAGE ESSAY CONTEST | | <p>1st Place - \$5,000</p> <p>2nd Place - \$1,000</p> <p>5 Finalists - \$500</p> <p>Expense Paid Trip to Boston</p> | <p>Apply online at www.jfklibrary.org</p> <p>Or see high school counselor</p> |
| GATES MILLENNIUM SCHOLARS PROGRAM | <ul style="list-style-type: none"> *Are African American, American Indian/Alaska Native, Asian pacific Islander American or Hispanic American *Permanent resident or national of the US Cumulative GPA of 3.3 or earned a GED *Enrolling for the first-time at a US accredited college or university *Leadership abilities *Meet Federal Pell Grant eligibility *Submit all three required forms | | <p>Application available at high school counselor's office or apply online at www.gmsp.org</p> |
| TEXAS TECH ENGINEERING SCHOLARSHIPS | <ul style="list-style-type: none"> *Maintain GPA of 3.0 *ACT 32 or SAT 1400 *Pursue full time study in | <p>\$10,000/ year for 4 years</p> | <p>Apply online at www.coe.ttu.edu/koh</p> |

| | | | |
|---|---|---|---|
| | an engineering discipline *Financial need may be a consideration | | |
| MENSA ESSAY CONTEST | *Essay Contest | \$300 to \$1000 awards | Applications available in high school counselor's office or at http://mensafoundation.org/scholarships |
| GEORGE WASHINGTON CROSSING FOUNDATION | *History Buff *Enjoy politics | \$500 to \$7500 | www.gwcf.org or call 215-949-8841 or 215-945-5189 |
| TEXAS ENGINEERING FOUNDATION | *US Citizen *High School Senior with 3.0+ GPA *Enter College in Fall 2009 *Enroll in an ABET accredited engineering program (www.abet.org/accreditea.c.asp) *SAT – 600 Math, 550 Reading, 500 Writing; or ACT – 29 Math, 25 English * | \$100,000 in scholarships | www.tspe.org or see high school counselor |
| AREA GO TEXAN SCHOLARSHIPS HOUSTON LIVESTOCK SHOW AND RODEO | *Participant in Houston Livestock Stock Show and Rodeo Area Go Texas Program *Citizenship *Residency *Academic standing *Collegiate acceptance/enrollment *Leadership and character | National award 4 year \$15,000 Local award Undetermined at this time | Jan. 22 for statewide competition TBA for local competition Applications available in high school counselor's office or online at www.rodeohouston.com Remember to give Elkhart High School your application (with a copy) so that Mr. Thomas can submit your application to the HLSR office. He will also submit your application to our local chapter for consideration. |

| | | | |
|--|---|---|--|
| <p>THE MCKELVEY FOUNDATION ENTREPRENEURIAL SCHOLARSHIP</p> | <p>*Must own and operate own business with at least one employee *Current high school graduate *Attend 4 year college in US *Complete online application by deadline</p> | <p>\$10,000 each year, renewable for four years</p> | <p>Apply online at www.mckelveyfoundation.org</p> |
| <p>SAM WALTON COMMUNITY SCHOLARSHIP</p> | <p>*Available to high school/home school seniors *Applicant can not be a Wal-Mart Stores, Inc. Associate or the dependent of a Wal-Mart Stores, Inc. Associate *Applicant must have a cumulative high school grade point average of at least 2.5 on a 4-point unweighted scale, and have taken either the ACT or SAT tests. *Applicant must be enrolled full time (*Applicant may apply once for the COMMUNITY Scholarship using the store number from their nearest Sam's Club or Wal-Mart store, but not both. Multiple applications will result in</p> | <p>\$1,000</p> | <p>Jan 31 Apply online at http://walmartstores.com/CommunityGiving/8736.aspx?p=236</p> |

| | | | |
|---|---|--|--|
| | disqualification. | | |
| TEXAS LYCEUM LEADERSHIP AWARD | *Texas resident *Exhibited leadership in school and community *Enrollment in any accredited Texas College or University *Minimum grade point average of 3.0 *Current year graduates | \$2,000 | TBA 214-891-0001 or Applications available in high school counselor's office |
| AMERICAN LEGION ORATORICAL CONTEST | *Oratorical Contest *Citizen of the US *Student under age of 20 | 1 st - \$18,000; 2 nd - \$16,000; 3 rd - \$14,000; Final round and state winners - \$1,500 | http://www.txlegion.org/home/index.php?option=com_wrapper&Itemid=74 or www.legion.org for more information |
| DISCOVER SCHOLARSHIP PROGRAM | *Juniors with a minimum 2.75 cumulative GPA for 9 th and 10 th grades *Demonstrate leadership *Actively contributing to community *Have experienced and overcome a significant obstacle(s) in life | 10 @ \$30,000 300 @ \$2,500 | Jan 31 www.discoverfinancial.com/community |
| BAYLOR UNIVERSITY COLLINS SCHOLAR | *Admission to Baylor *Top Quarter of class *SAT 1250 or ACT 28 *Texas resident for at least one year | \$4,150/Year for 4 years | Jan 31 www.baylor.edu/admissions/CarrPCollins |
| NUCOR FOUNDATION Scholarship and Internship Opportunity | *Must be pursuing a career in civil engineering *Must not be affiliated with the foundation as defined in the Internal Revenue Code section | \$3000 per year, renewable | Feb 1 Applications are available in the high school counselor's office |

| | | | |
|---------------------------------------|---|-------------------|---|
| | <p>4946</p> <p>*Must not be currently receiving any scholarship money from Nucor, or be current children of Nucor employees who are receiving scholarship funds</p> <p>*Current recipients will need to reapply for additional yearly scholarships</p> <p>*Undergraduate or graduate students are eligible</p> | | |
| STEWART'S SCHOLARS | <p>*Resident of an East Texas county</p> <p>* Enrolled in a high school that holds at least two blood drives</p> <p>*Actively participate in the blood drive</p> <p>*Graduating high school senior</p> <p>*Maintained high school GPA of 2.5 or better</p> <p>Personal leadership among peers</p> | \$1,000 | <p>Feb. 13</p> <p>Applications available from your high school counselor or at www.stewartblood.org</p> |
| AXA ACHIEVEMENT COMMUNITY SCHOLARSHIP | <p>*Ambition and drive</p> <p>*Determination to set and reach goals</p> <p>*Respect for self, family and community</p> <p>*Ability to succeed in college</p> | \$2,000 | <p>Feb. 15</p> <p>www.axa-achievement.com or see high school counselor</p> |
| ACCESS TO | *Financial Need | \$1500, renewable | Feb 15 |

| | | | |
|--|--|-------------------------|---|
| EDUCATION | *Enroll in qualified postsecondary-education program as a full or half time student (50% of scholarships awarded to students with financial need, members of ethnic-minority group, or physically disabled) | | www.usafunds.org/scholarship |
| CARR SCHOLARSHIP PROGRAM | *High academic ability *Moral character *Extracurricular activities *Special talents and abilities *Acceptance at Angelo State University | | TBA www.angelo.edu |
| NATIONAL COMMISSION FOR COOPERATIVE EDUCATION | *Admitted to one of the ten NCCE Partner Colleges | 200 awards \$6,000 each | Feb 15 www.co-op.edu |
| FFA SCHOLARSHIPS (VARIOUS SCHOLARSHIPS WITH VARIED CRITERIA) | | | TBA www.uticorp.com/go/studentcenter/scholarships/ |
| UNIVERSITY OF TEXAS AT SAN ANTONIO | *Must be admitted to UTSA *Criteria varies with each scholarship | | TBA http://www.utsa.edu/terrerscholars/index.html http://www.utsa.edu/honorshonors@utsa.edu |
| BARBARA JORDAN HISTORICAL ESSAY COMPETITION | *Theme "The African American in Texas: Past and Present" | | TBA www.utexas.edu/world/barbarajordan/ |
| TEXAS COUNCIL FOR THE SOCIAL | *Graduating high school or college student intent | 2 - \$2000 awards | TBA Must apply online at |

| | | | |
|---|---|---|---|
| STUDIES | on a career teaching social studies. *Applicant's major field of study must be related to social studies education | | http://www.txcss.org/awards.htm |
| BEST BUY | *Community service *Academics | | Dec. 28, 2008 – Feb. 15, 2009 Apply at www.bestbuy.com/scholarships or www.at15.com |
| COMMITMENT TO AGRICULTURE SCHOLARSHIP PROGRAM | *Plan to pursue a career in an agriculture-related field | | TBA Apply online only at www.monsanto.com or www.ffa.com |
| ACT HIGH SCHOOL POSTER CONCEPT CONTEST | *11 th or 12 th grade high school student *Resident of Florida, Oregon, Texas or Wisconsin *Eligible for 2008 or 2009 college admission | 1 st - \$5,000 2 nd - \$2,500 3 rd - \$1,000 | TBA www.actstudent.org/postercontest |
| NATIONAL CO-OP SCHOLARSHIP PROGRAM | *GPA of 3.5 or better *Be accepted at one of the National Commission Partner Institutions | \$6,000 each year, renewable | TBA Online application at www.co-op-edu |
| RONALD MCDONALD HOUSE CHARITIES | *Graduating high school senior *Financial Need | 4 individual programs | Feb 16 Applications available at www.rmhc.org Or see high school counselor |
| USA FUNDS ACCESS TO EDUCATION | *Economic Need *Full or half time student *50% targeted to ethnic minority group or physically disabled students | \$1,500 | Dec. 15, 2008 – Feb. 16, 2009 Apply online at www.usafunds.org/scholarship |

| | | | |
|--|---|---|---|
| DALLAS SCOTTISH RITE LIBRARY AND MUSEUM (MASONIC PROGRAM) | *Reside in Dallas Scottish Rite membership area *Merit and student achievement *SAT/Act scores *Extracurricular activities | | TBA www.dallasscottishrite.org |
| EAST TEXAS COMMUNITIES FOUNDATION | See website for more information | | TBA www.etcf.org |
| EDUCATIONAL TOURS | *Essay *High school sophomores or juniors *Permanent residents of US or Canada *Nominated by school | 10 day expense paid international educational tour and iPod | TBA Applications in counselor's office or at www.eftours.com/globalcitizen |
| VOICE OF THE FUTURE | *Any student in grades 11 or 12 *Essay Contest | Up to \$10,000 available | TBA www.elpublishers.com/content/scholarship-voiceofthefuture.php |
| TEXAS DEPARTMENT OF TRANSPORTATION CONDITIONAL GRANT PROGRAM | *Texas resident *Economically Disadvantaged *Attend a Texas 4 year public college or university full time | \$6,000 per academic year | TBA Applications in counselor's office, at www.txdot.gov/careers , or call 1-866-554-43330 |
| ENGINEERGIRL! | *Grades 3-12 *Essay | \$500, \$250, and \$100 awards | Mar 1 http://www.engineergirl.org/CMS/Contest.aspx |
| PALESTINE REGIONAL MEDICAL CENTER | *Pursue a degree in Registered Nursing *Extra-curricular activities *Reside within the hospital service area | 5 - \$2,000 awards | March 9 www.palestineregional.com under Community or Get application from high school counselor |
| TYLER JUNIOR COLLEGE SCHOLARSHIP PROGRAM | *Incoming freshmen *Other criteria vary with scholarship | \$1,000-\$3,000 per year for two years | March 1, but earlier is better Download application at www.tjc.edu |

| | | | |
|---|---|--|--|
| SAM HOUSTON STATE UNIVERSITY SMITH-HUTSON | <ul style="list-style-type: none"> *Resident of Texas *Admission to SHSU *Be a declared business major *Financial Need *Essay *2 Letters of Recommendation *Unmarried with no children | Up to \$12,000 per year, renewable | <p>TBA</p> <p>Applications in Counselor's office or Contact Dr Leroy Ashorn, Associate Dean, for information/application. SHSU Box 2056 Huntsville TX 77341, lashorn@shsu.edu, (936) 294-1239.</p> |
| HOUSTON COCA-COLA BOTTLING "SHARE THE DREAM" ESSAY CONTEST | *Students in grades 9 - 12 | <ul style="list-style-type: none"> 1 - \$2,500 1 - \$1,500 1-\$1,000 1-\$500 <p>All with a personal computer Also 20 - \$500</p> | <p>TBA</p> <p>See counselor for rules and information or www.mcreynoldsms.org/coca.htm</p> |
| DOGWOOD TRAILS QUEEN'S CONTEST | <ul style="list-style-type: none"> *Female and at least 16 years of age *Unmarried *Resident of Anderson County *Free of visible body piercing or tattoos *Evening Gown | \$1,000 | <p>TBA</p> <p>Application in counselor's office, at www.palestinechamber.org Or the Palestine Visitor Center</p> |
| SAMMY 2009 | <ul style="list-style-type: none"> *Graduating high school athlete *Academics *Athletic performance *Leadership *Community Service | \$7,500 | <p>March 6</p> <p>Apply online only at www.bodybymilk.com</p> |
| AREA GO TEXAN SCHOLARSHIPS HOUSTON LIVESTOCK SHOW AND RODEO | <ul style="list-style-type: none"> *Participant in Houston Livestock Stock Show and Rodeo Area Go Texas Program *Citizenship | <p>National award 4 year \$15,000</p> <p>Local award Undetermined at this</p> | <p>TBA for local chapter</p> <p>Applications available in high school counselor's office or online at www.rodeohouston.com</p> |

| | | | |
|--|--|-------------------------------|--|
| | <ul style="list-style-type: none"> *Residency *Academic standing *Collegiate acceptance/enrollment *Leadership and character | time | |
| ASSOCIATION FOR COMPENSATORY EDUCATORS OF TEXAS | <p>*At some time in school career participated in a compensatory education program (A compensatory education program is defined as a program that provides remedial assistance and support for students who have failed the Texas Assessment of Academic Skills (TAKS) or are at-risk of dropping out of school. Additional programs include programs for migrant, Title I, bilingual education/English as second language (ESL), and pregnant or parenting students.)</p> <p>*There is also a program for paraprofessionals continuing their education to become educators.</p> | | <p>TBA</p> <p>www.acetx.org</p> <p>or see high school counselor</p> |
| OZARKA "EVERY DROP COUNTS" EARTH SCIENCE SCHOLARSHIP | *Pursue a degree in the field of earth/environmental science at a four-year college or university | 2 awards in Texas of \$10,000 | <p>TBA</p> <p>www.ozarkawater.com</p> <p>or contact High School Counselor</p> |
| GOSS-MICHAEL | *Graduating Texas high | \$5,000 | March 31 |

| | | | |
|--|---|---|---|
| FOUNDATION | school Senior *Pursue a fine arts degree | | www.gossmichaelfoundation.org or contact High School Counselor |
| FREESTONE COUNTY GOAT BREEDERS ASSOCIATION | *Current resident of Freestone, Anderson, Henderson, Limestone, Leon, or Navarro county *Member of 4-H or FFA *Volunteer service *Accepted to technical school, 2 year, or 4 year college *High school graduate spring 2009 *Essay | | April 1 www.freestonecountygoats.org or see high school counselor |
| CHARLES, LELA AND MARY SLOUGH FOUNDATION SCHOLARSHIP | *3.0 GPA *US citizen *Texas resident *Complete FAFSA | \$5,000 a year renewable for up to five years | April 1 www.midland.edu/admissions/aid/forms/slough.pdf or see high school counselor |
| HERITAGE LAND BANK | *Pursue education in agricultural field *Resident of surrounding county *Letters of Recommendation | 4 awards of \$2,500 each | TBA www.heritagelandbank.com or see high school counselor for application |
| TEXAS STATE TECHNICAL COLLEGE MARSHALL | *Attend TSTC *Merit-based *Specific majors | Amount varies with scholarship | TBA Applications in high school counselor's office or at www.marshall.txstc.edu/financialaid/scholarships |
| TEXAS INTERSCHOLASTIC LEAGUE SCHOLARSHIPS | *Compete in one of the UIL Academic State Meet Contests | | TBA www.uil.utexas.edu |
| TRINITY VALLEY ELECTRIC COOPERATIVE | *Maintain permanent residence on the Cooperative's lines | \$2,000 TOP 20% | April 7 Applications available in counselor's office and in the Texas Coop Power |

| | | | |
|-----------------------------------|--|------------------------------------|---|
| | <ul style="list-style-type: none"> *Need *Leadership *Achievement | | magazine |
| DON'T MESS WITH TEXAS SCHOLARSHIP | <ul style="list-style-type: none"> *Help prevent litter *High school 2009 graduate *Attend an accredited 2 or 4 year Texas college or university *Essay *Letter of Recommendation *Application | One \$3,000 and two \$1,000 awards | <p>TBA</p> <p>Applications available in counselor's office or www.dontmesswithtexas.org</p> |
| EAST TEXAS CATTLE – ETTES | <ul style="list-style-type: none"> *Graduating high school senior in east Texas area *Attend Tyler Junior College *Minimum of 12 college hours per semester *Pursue an Agriculture related field of study | \$1,000 | <p>TBA</p> <p>Download application at http://www.etstatefair.com/scholarship.php</p> |
| EAST TEXAS FARM AND RANCH CLUB | <ul style="list-style-type: none"> *Graduating high school senior *Attend an accredited college for the next 2 years *2.5 cumulative GPA *Minimum of 12 college credit hours per semester *No family members on the Board of Directors or Scholarship Committee | \$1,000 | <p>TBA</p> <p>Download application at http://www.etstatefair.com/scholarship.php</p> |
| EAST TEXAS STATE FAIR ASSOCIATION | <ul style="list-style-type: none"> *Graduating high school senior *Attend Tyler Jr. College for the next 2 years | \$3,000 | <p>TBA</p> <p>Download application at http://www.etstatefair.com/scholarship.php</p> |

| | | | |
|--|--|------------------|--|
| | <ul style="list-style-type: none"> *3.0 cumulative GPA *12 credit college hours per semester *No family members on the ETSF Board of Directors or Scholarship Committee | | |
| EAST TEXAS PINEYWOODS CATTLEWOMEN HERITAGE LAND BANK | <ul style="list-style-type: none"> *Graduating high school senior *Attend an accredited Texas college or university *Need, scholarship, leadership, citizenship, project work *ACT or SAT test scores *Attend an agricultural related program | \$500 | <p style="text-align: center;">TBA</p> <p style="text-align: center;">Download application at http://www.etstatefair.com/scholarship.php</p> |
| La Poynor PARENT TEACHER Organization | <p>LaPoynor High School Senior</p> <ul style="list-style-type: none"> *Write letter to include community service, outstanding academic performance, extra curricular activities, character references | 2 - \$250 awards | <p style="text-align: center;">April 15</p> <p style="text-align: center;">Detailed instructions available at High School Counselor's office Turn in completed letters to High School Counselor</p> |
| TEXAS HIGHER EDUCATION | <ul style="list-style-type: none"> *Must graduate from high school in less than 4 years *or have 30 college hours | \$1,000 | *At least 30 days prior to graduation date |
| TVCC SCHOLARSHIP | <ul style="list-style-type: none"> *Attend TVCC | | <p style="text-align: center;">April 15</p> <p style="text-align: center;">Applications in high school counselor's office or download at http://www.tvcc.edu/finserv/PDF/Scholarship%20Application%20Jan%2008.pdf</p> |
| MOLLY GEROLD SCHOLARSHIP | <ul style="list-style-type: none"> *High School Graduating Senior | \$1,000 | <p style="text-align: center;">TBA</p> <p style="text-align: center;">Download application at</p> |

| | | | |
|---|--|---|---|
| | *Attending High school has a TSCA member | | http://www.txca.org/tca/Scholarship_Application.asp?SnID=290133083 Or available in high school counselor's office |
| TEXAS TENNIS AND EDUCATION FOUNDATION SCHOLARSHIP | *High School Graduate 2009 *U.S. Citizen *Live in the Texas section *Interest in Tennis *Financial Need | | TBA Download application at www.texastennisfoundation.com or see high school counselor |
| TEENS IN THE DRIVER SEAT | *Member of peer mentoring high school group | 3 prizes in each category \$1000, \$500, \$250 | TBA Applications and information at www.t-driver.com or see your high school counselor |
| TEXAS INTERSCHOLASTIC LEAGUE FOUNDATION | *Any student who advances to and competes in the UIL State Academic Meet at any point in his or her high school career earns eligibility | | TBA www.uil.utexas.edu and click on the entry for Texas Interscholastic League Foundation or applications available in counselor's office |
| GOSS-MICHAEL FOUNDATION | *Pursue a degree in visual arts *Be a graduating high school senior | \$5,000 | TBA Applications in high school counselor's office or www.gossmichaelfoundation.org or call 214-696-0555 |
| PLATINUM TORCH | *Community service involvement *High school senior or college student | 4 - \$500 awards | TBA www.platinumtorch.org |
| EDUCATIONAL COMMUNICATIONS SCHOLARSHIP FOUNDATION | *Resident of the USA *SAT or ACT scores *\$4.00 Fee | | TBA www.ecisf.org or applications in counselor's office |
| SADD SCHOLARSHIPS | *Entering his or her freshman year of college * *Dedicated to living the SADD lifestyle (i.e., safe | | TBA Apply online at http://www.sadd.org/scholarship.htm |

| | | | |
|---|---|--|---|
| | and substance-free) *A resident of the United States | | |
| IMAGINE AMERICA SCHOLARSHIP PROGRAM | *Meet college admission requirements *GPA of 2.5 or higher *Financial Need *Demonstrate voluntary community service during senior year | | Must apply online at www.imagine-america.org |
| TEXAS TECH ALUMNI ASSOCIATION | *Must attend Texas Tech University *High school senior 2009 | | TBA Applications available from high school counselor or www.texastechalumni.org |
| CHALLENGE THE EXPERTS Up to \$10,000 available | *Essay Contest *Any student in grades 11 or 12 | | TBA www.e-publishers.com/content/scholarship-challengetheexperts.php |
| TEXAS B-ON-TIME LOAN PROGRAM | *Have completed a FAFSA and be eligible to | | For more information go to http://www.hhloans.com |

| | | | |
|-------------------|---|------------------------|---|
| | <p>receive federal financial aid</p> <ul style="list-style-type: none"> * Be enrolled full time in an undergraduate degree or certificate program at an eligible institution and *Be a Texas resident or be entitled to pay resident tuition rates as a dependent child of a member of the U.S. armed forces and * Have graduated in the 2002-2003 academic year or later from a high school operated by the U.S. Department of Defense or under the recommended high school program from a public or accredited private high school in Texas or * Have earned an associate's degree from an eligible institution no earlier than May 1, 2005 | | |
| Al's Formal Wear | Visit website for complete rules | 2-\$2,500 scholarships | Go to www.alsformalwear.com June 10, 2009 |
| Slough Foundation | GPA of 3.0 Texas Resident Essay Complete FASFA | \$5,000 | See counselor or go to www.midland.edu/admissions/aid/forms/slough.pdf |

| | | | |
|---|--|--------------------|---|
| John P Howe/Texas Society for Biomedical Research | Essay on: "Why Animals are Important to Biomedical research" | \$500.00 | Junior or Senior March 1, 2009 See counselor for entry submission |
| Tommy Tipton Stringfield | La Poynor Senior | \$500.00 | See Counselor |
| TVCC Theatre Dept. | Senior | Not specified | See counselor |
| Lincoln College of Technology | Must enter automotive technology or other area in this field | \$1,000 | See counselor or call 800-777-0366 |
| Olga Coats Lang | Students other than top 2 Not a member of the Lang Family | \$500 per semester | See counselor |
| Henderson County Literacy Club | Must be female Essay For TVCC only | \$1,400 | See counselor |
| La Poynor ISD National Honor Society Scholarship | Must be a member of NHS, more details to come | | See Counselor |
| LAPOYNOR LOCAL ATPE | SENIOR | Not specified | See Counselor |
| Dorothy Morton Eastern Star | No preference | \$500 | Donor will determine winner. |
| Alamo Patio Incorporated | Student who plans to attend a 4 year university | \$100.00 | Scholarship Committee |
| William Foster Masonic Lodge #312 | Senior | \$1000.00 | Donor will determine winner |
| First State Bank-Athens | Senior One who's family is considered low-moderate income | \$500.00 | See Counselor |

| | | | |
|--|--|----------|---------------|
| Athens Odd-Fellow Lodge #961 and Rebekah Lodge #23 | Senior Must be more than one person apply. TVCC only | \$500.00 | See counselor |
| TVCC Foundation | TVCC only | \$500.00 | See counselor |
| TVCC Superintendent's Scholarship | TVCC only | \$750.00 | See Counselor |

CAREER CAMPS/INTERN PROGRAMS

| NAME | ELIGIBLE PARTICIPANTS | DEADLINE | CONTACT |
|---|--|----------|---|
| CRIMINAL JUSTICE SUMMER CAMP | *High school student age 15-17 interested in solving mock crimes, visiting morgue, exploring prison, etc. *Cost \$500 | TBA | Applications and more information available at www.cjcenter.org/college/camp/index |
| NATIONAL YOUTH SCIENCE CAMP | *Graduating high school in current school year *Science student *All expenses paid *Trip to Washington D.C. | | Download application at http://nysc.org/2009/indix.html and mail to Irene Pickhardt, National Youth Science Camp, Texas Education Agency, 1701 Congress Ave., Austin, TX 78701 |
| TEXAS A&M UNIVERSITY STUDENT LEADERS OF TOMORROW CONFERENCE | *High school juniors and seniors *Cost is \$90.00 | TBA | Held February 15-17, 2008 http://slot.tamu.edu |
| EDUCATIONAL TOURS GLOBAL CITIZEN AWARDS | *High school sophomore or junior *Must be nominated by school *Permanent residents of | TBA | www.eftours.com/globalcitizen |

| | | | |
|---|---|---|---|
| | the USA or Canada *Essay | | |
| AMERICAN LEGION BOYS STATE | *If interested please contact your high school counselor about a nomination *Fees paid by local American Legion sponsor *Held at UT of Texas at Austin *Summer | TBA | www.txlegionbstate.org or high school counselor |
| TEXAS A & M CAMP ARCH | *Interested in a career in Architecture, Visualization, Landscape Architecture, or Construction Management | TBA | http://archone.tamu.edu/College/Academics/CampArch/ for more information and application or see high school counselor |
| RISE (RESEARCH INVOLVING STUDENT ENGINEERS) | *High school student entering grades 10-12 *Interest in engineering | TBA Cost is \$299, may request scholarship | Sponsored by UT of Tyler For applications see high school counselor or http://cecs.uttyler.edu/summercamp.htm |
| ECONOMICS FOR LEADERS LEADERSHIP PROGRAM | *Be a junior in high school | TBA | www.fte.org/students/efl |
| SUMMER LEADERS SEMINAR HOSTED BY UNITED STATES MILITARY ACADEMY | *In Top 5 th of high school class *Pursuing a college preparatory curriculum *Strong PSAT scores *Demonstrated leadership potential | TBA | http://admissions.usma.edu |
| TEXAS GOVERNOR'S SCHOOL | *High Academic Motivation and an interest in science, mathematics, and engineering | TBA | High School Counselor or www.unt.edu/tgs |

| | | | |
|---|---|-----------------------|---|
| | <ul style="list-style-type: none"> *Only expense to participants is travel to and from Denton *Located at the campus of the University of North Texas at Denton *Three-week residential summer program | | |
| SAVANNAH COLLEGE OF ART AND DESIGN | <ul style="list-style-type: none"> *Pay cost of camp *Academic strength *Social maturity *Desire to succeed in the arts | TBA | summerseminars@scad.edu or www.scad.edu |
| SCIENCE & TECHNOLOGY PREVIEW STEP CAMP | <ul style="list-style-type: none"> *Parental Permission *Strong background in math, science, computers | TBA | www.marshall.tstc.edu Or High School Counselor |
| LON MORRIS COLLEGE SUMMER PREP PROGRAM | *Attend Jun 4 – July 5 | TBA | Sandy White Lon Morris College 903-589-4030 www.swhite@lonmorris.edu |
| PACE UNIVERSITY SUMMER SCHOLARS PROGRAM | <ul style="list-style-type: none"> *Sophomore or Junior in High school *GPA of 85 or above *Scholarships are available | TBA | www.pace.edu/summerscholars |
| TEXAS TOBACCO-FREE TEEN LEADERSHIP SUMMIT | *Ages 14-17 | Varies with each camp | 1-877-304 2727 or www.cscs.txstate.edu |
| NASA JOHNSON SPACE CENTER HAS PROGRAM | <ul style="list-style-type: none"> *High school junior *Interactive, online learning experience *All-expense paid trip to NASA *Earn science elective | Nov. 14, 2008 | Apply online at http://aerospacescholars.jsc.nasa.gov/HAS |

| | | | |
|---------------------------------------|--|--|---|
| | credit *Discover career opportunities | | |
| CIEE FOREIGN EXCHANGE STUDENT PROGRAM | | | For more information visit: www.ciee.org/hsabroad |